

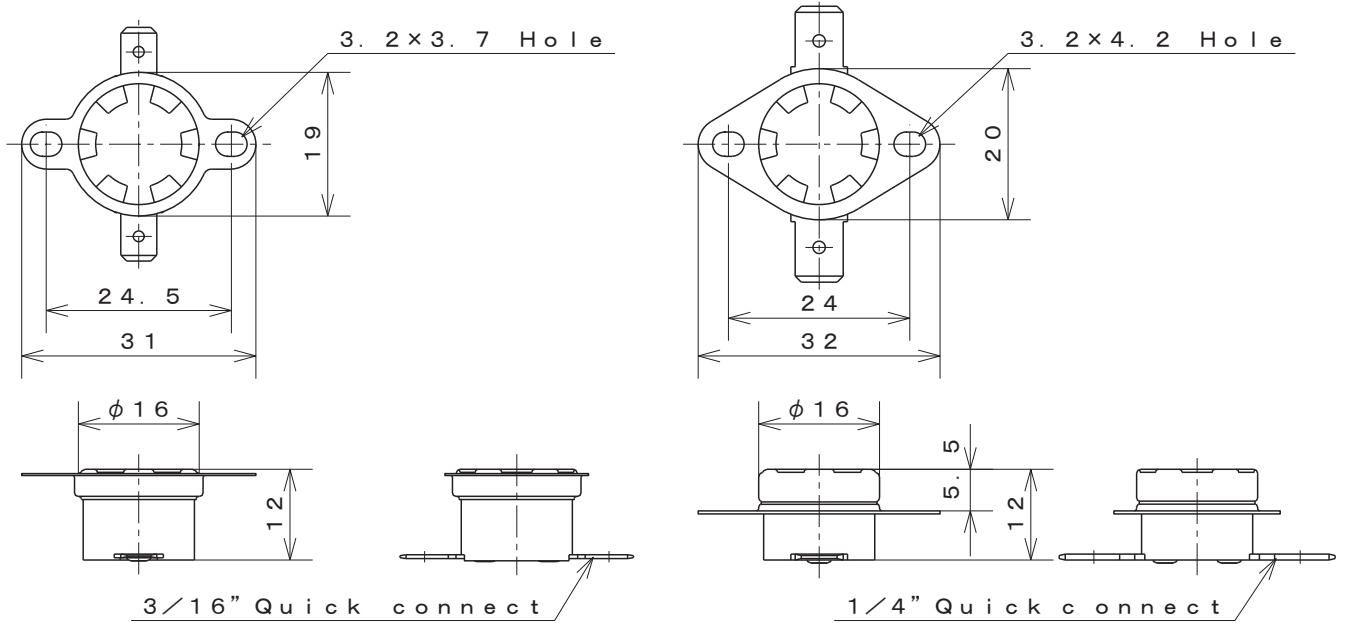


1/2" Disc Type Thermostat
High Temp. Type

Type **52N**

UL·CSA·VDE
Recognized

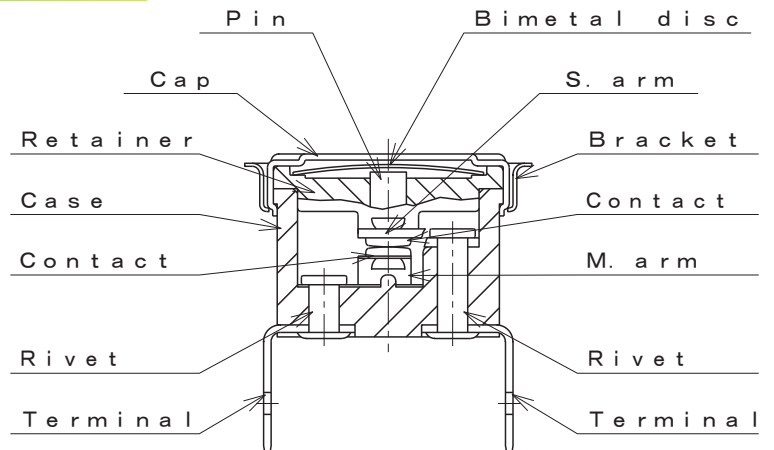
Dimensions



Materials of parts

Part	Material
Cap	Aluminum Copper Stainless steel
Case	Ceramic
M.arm	Beryllium Copper alloy
Terminals	Brass, Steel
Bracket	Stainless steel
Contacts	Silver-Nickel alloy

Structure



Specification

Item	Specification
1. Basic features	SPST Automatic reset
2. Operation	A : Contacts open on temperature rise B : Contacts close on temperature rise
3. Electrical rating	UL, CSA : AC125V/15A AC250V/10A (100,000 cycles) VDE : AC250V/10A (100,000 cycles) , AC250V/16A (10,000 cycles)
4. Calibration method	Hot & cold air circulation system
5. Temperature rating	Operating temperature Max. 200°C 230°C
6. Insulation resistance	Not less than 1,000MΩ/DC500V
7. Dielectric strength	Not less than AC1,500V/1min. or AC1,800V/1sec.

Standard

UL 873	UL File	No. E43273
CSA C22.2 No. 24	CSA Report	No. LR67165, LR67166
DIN EN 60730-1, -2-9	VDE Licence	No. 100896, 40004992

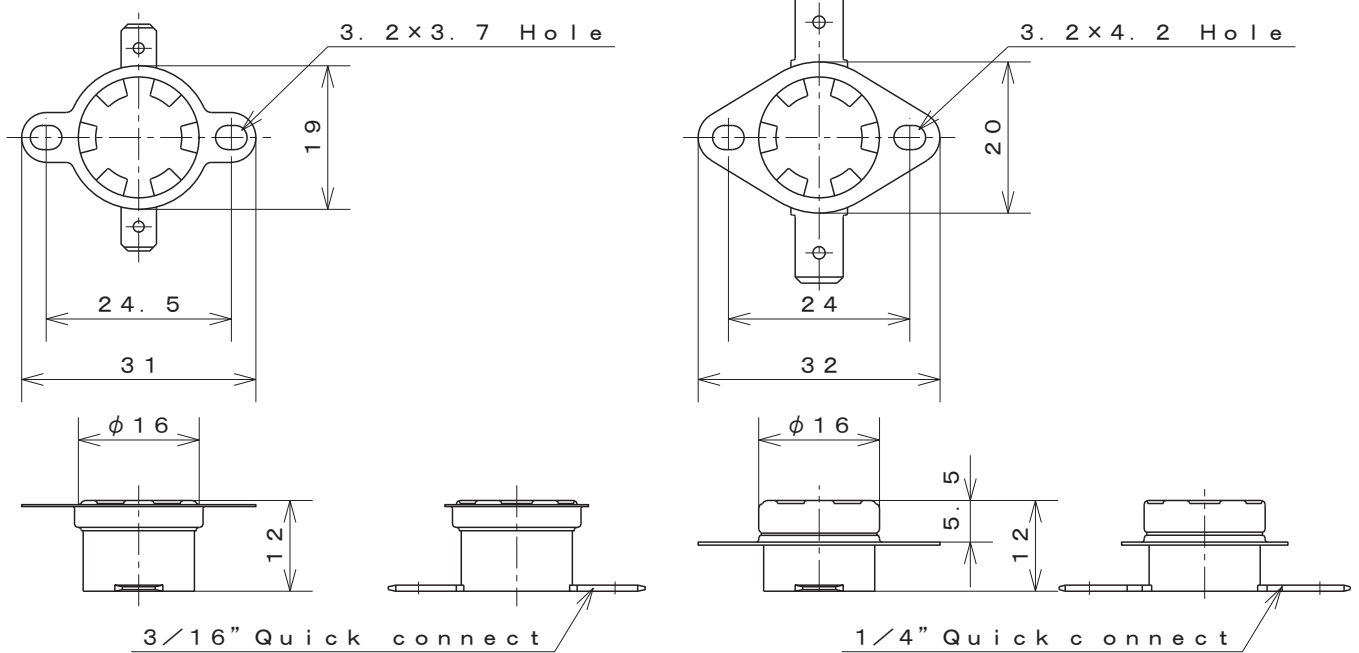


1/2" Disc Type Thermostat
High Temp. Type

Type **52P**

UL·CSA·VDE
Recognized

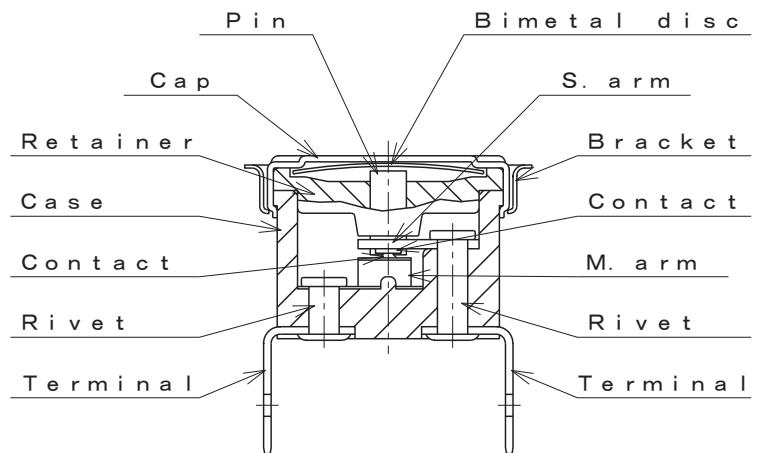
Dimensions



Materials of parts

Part	Material
Cap	Aluminum
	Copper
	Stainless steel
Case	Ceramic
M.arm	Beryllium Copper alloy
Terminals	Brass, Steel
Bracket	Stainless steel
Contacts	PGS-Crossbar

Structure



Specification

Item	Specification
1. Basic features	SPST Automatic reset
2. Operation	A : Contacts open on temperature rise B : Contacts close on temperature rise
3. Electrical rating	AC250V/0.2A DC42V/0.2A
4. Calibration method	Hot & cold air circulation system
5. Temperature rating	Operating temperature Max. 230°C
6. Insulation resistance	Not less than 1,000MΩ/DC500V
7. Dielectric strength	Not less than AC1,500V/1min. or AC1,800V/1sec.

Standard

UL 873, C-UR	UL File	No. E43273
CSA C22.2 No. 24	CSA Report	No. LR67165, LR67166
DIN EN 60730-1, -2-9	VDE Licence	No. 100896, 40004992